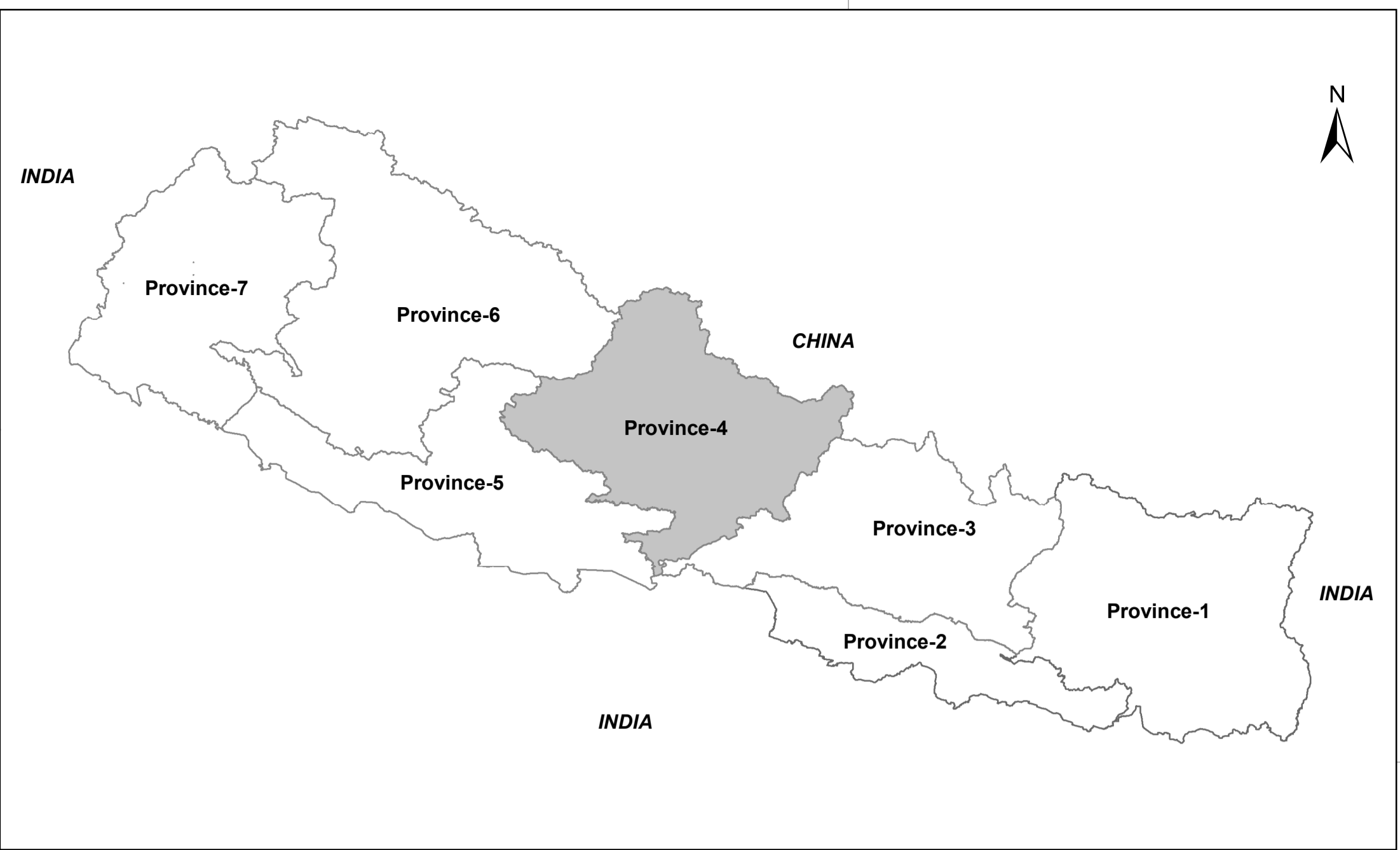
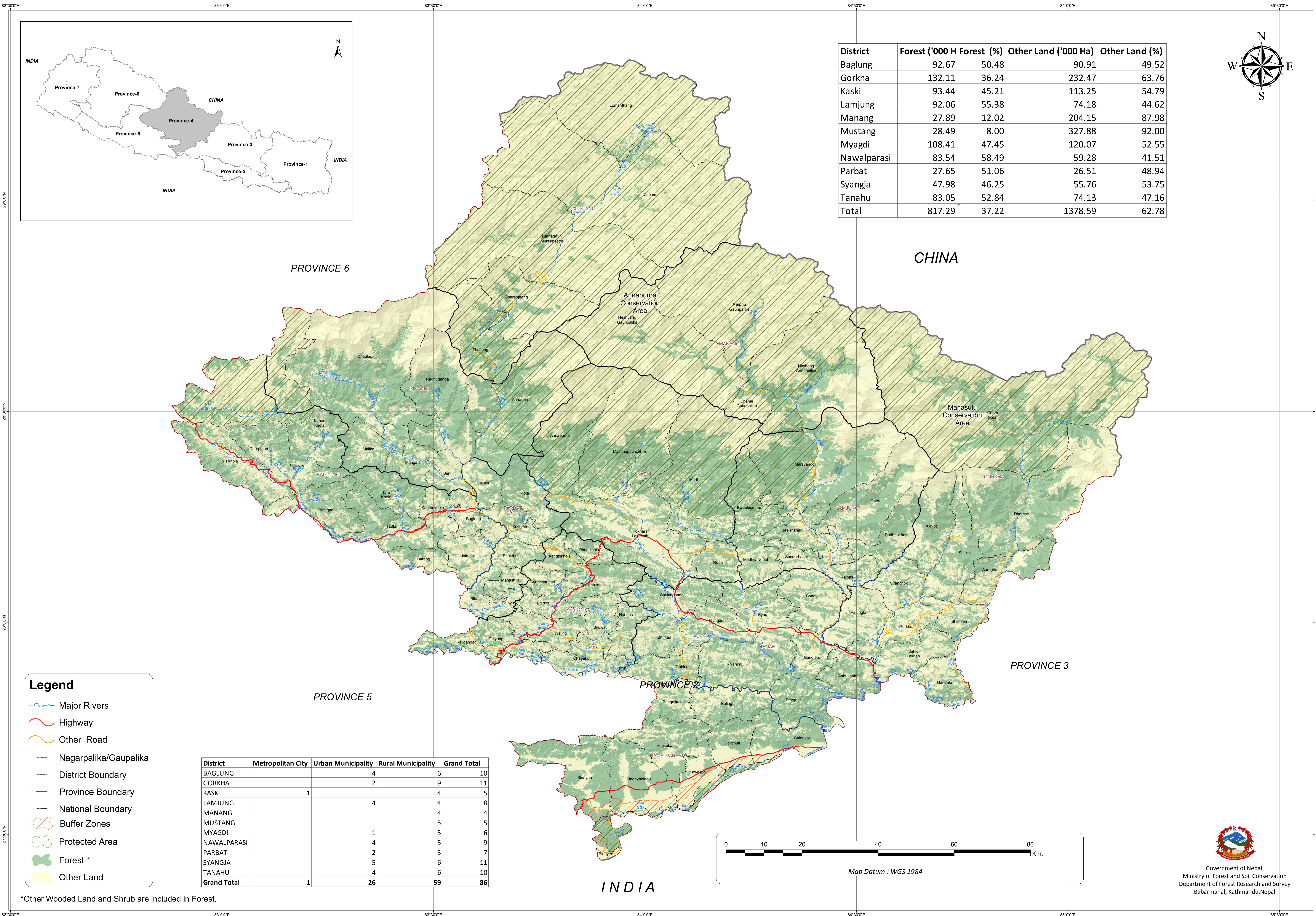
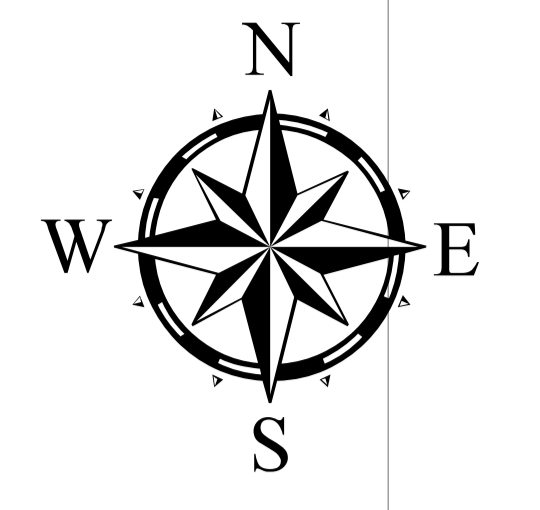


FOREST COVER MAP OF PROVINCE 4, NEPAL



District	Forest ('000 H	Forest (%)	Other Land ('000 Ha	Other Land (%)
Baglung	92.67	50.48	90.91	49.52
Gorkha	132.11	36.24	232.47	63.76
Kaski	93.44	45.21	113.25	54.79
Lamjung	92.06	55.38	74.18	44.62
Manang	27.89	12.02	204.15	87.98
Mustang	28.49	8.00	327.88	92.00
Myagdi	108.41	47.45	120.07	52.55
Nawalparasi	83.54	58.49	59.28	41.51
Parbat	27.65	51.06	26.51	48.94
Syangja	47.98	46.25	55.76	53.75
Tanahu	83.05	52.84	74.13	47.16
Total	817.29	37.22	1378.59	62.78



Legend

- Major Rivers
- Highway
- Other Road
- Nagarpalika/Gaupalika
- District Boundary
- Province Boundary
- National Boundary
- Buffer Zones
- Protected Area
- Forest *
- Other Land

District	Metropolitan City	Urban Municipality	Rural Municipality	Grand Total
BAGLUNG			6	10
GORKHA		2	9	11
KASKI	1		4	5
LAMJUNG		4	4	8
MANANG			4	4
MUSTANG			5	5
MYAGDI		1	5	6
NAWALPARASI		4	5	9
PARBAT		2	5	7
SYANGJA		5	6	11
TANAHU		4	6	10
Grand Total	1	26	59	86

